

Q1: Identify the location of all of the local minima

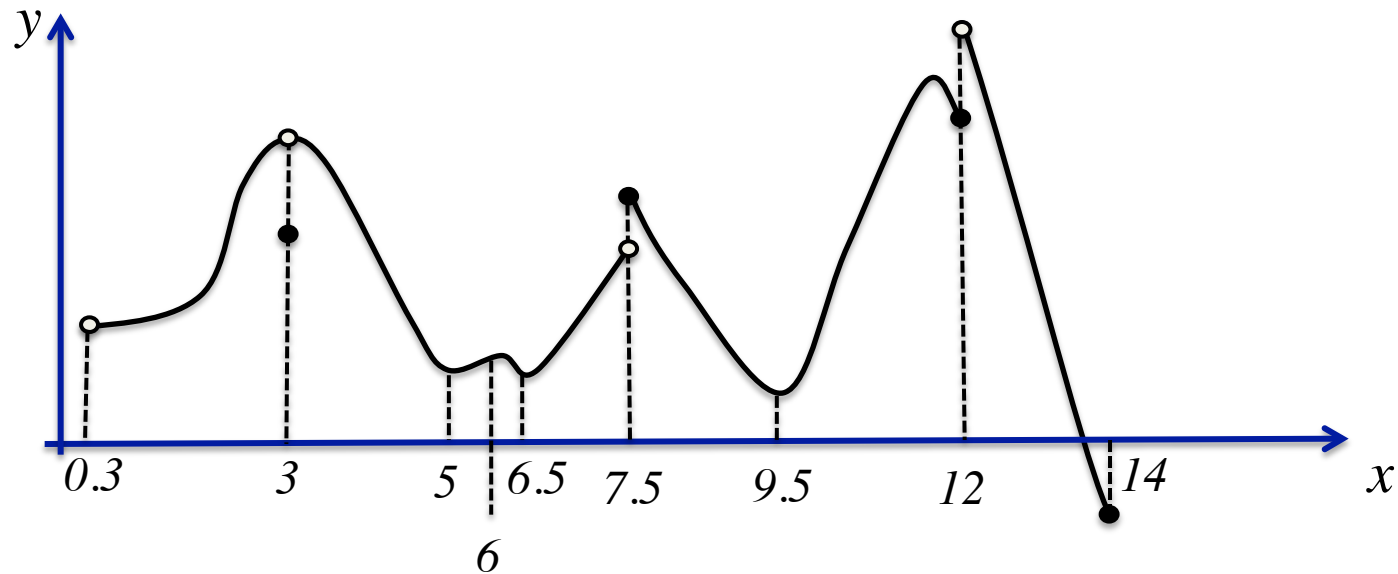
a) 0.3, 5, 6.5, 9.5, 12, 14

d) 0.3, 5, 6.5, 7.5, 9.5, 12, 14

b) 5, 6.5, 9.5, 12, 14

e) None of the above!

c) 5, 6.5, 9.5, 12



Q1: Identify the location of all of the local minima

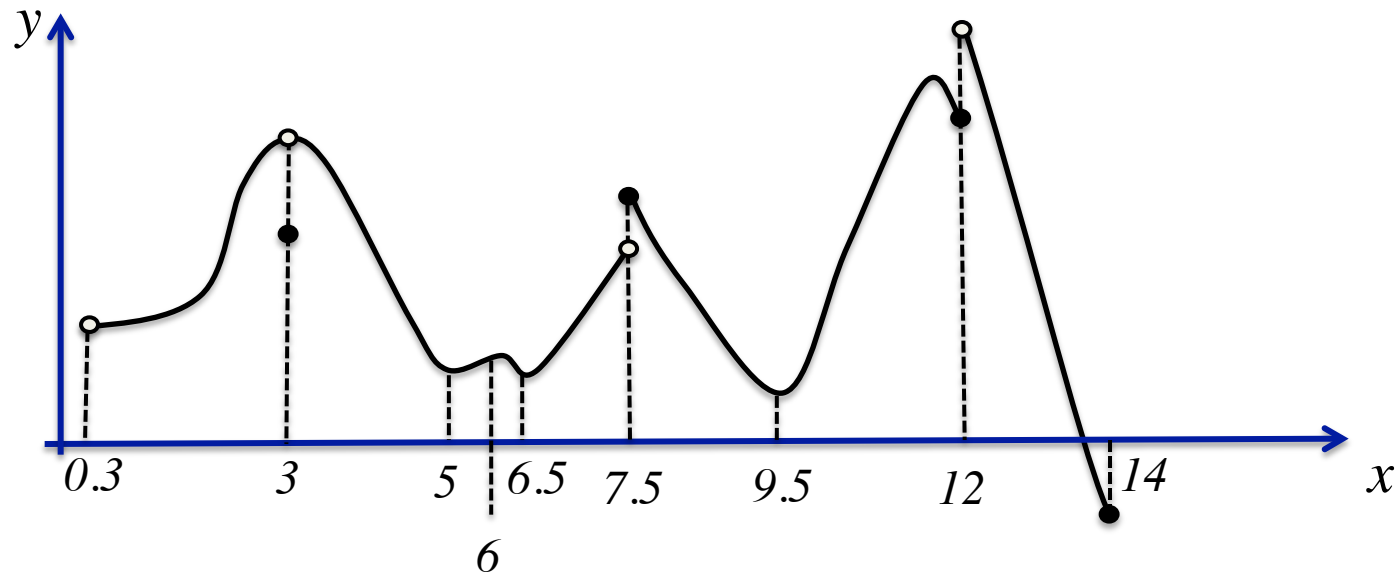
a) 0.3, 5, 6.5, 9.5, 12, 14

d) 0.3, 5, 6.5, 7.5, 9.5, 12, 14

b) 5, 6.5, 9.5, 12, 14

e) None of the above!

c) 5, 6.5, 9.5, 12, (3?)



Q2: Identify the location of all of the local maxima

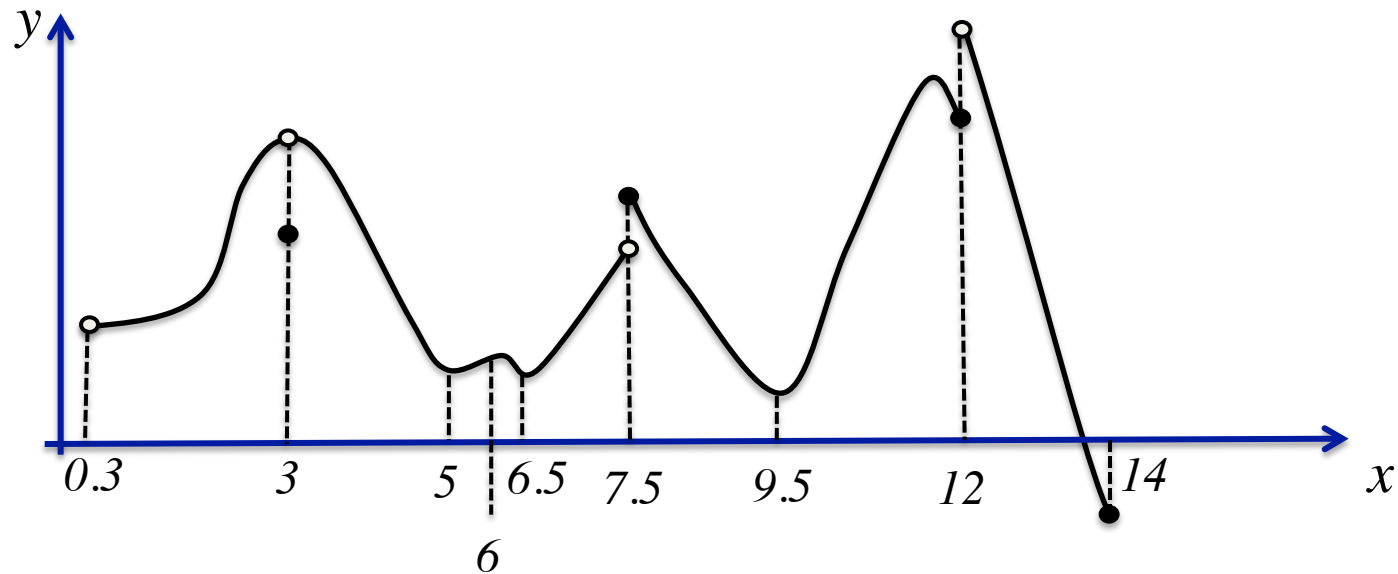
a) 6, 7.5

d) 6, 12

b) 3, 6, 7.5, 12

e) None of the above!

c) 3, 7.5, 12



Q2: Identify the location of all of the local maxima

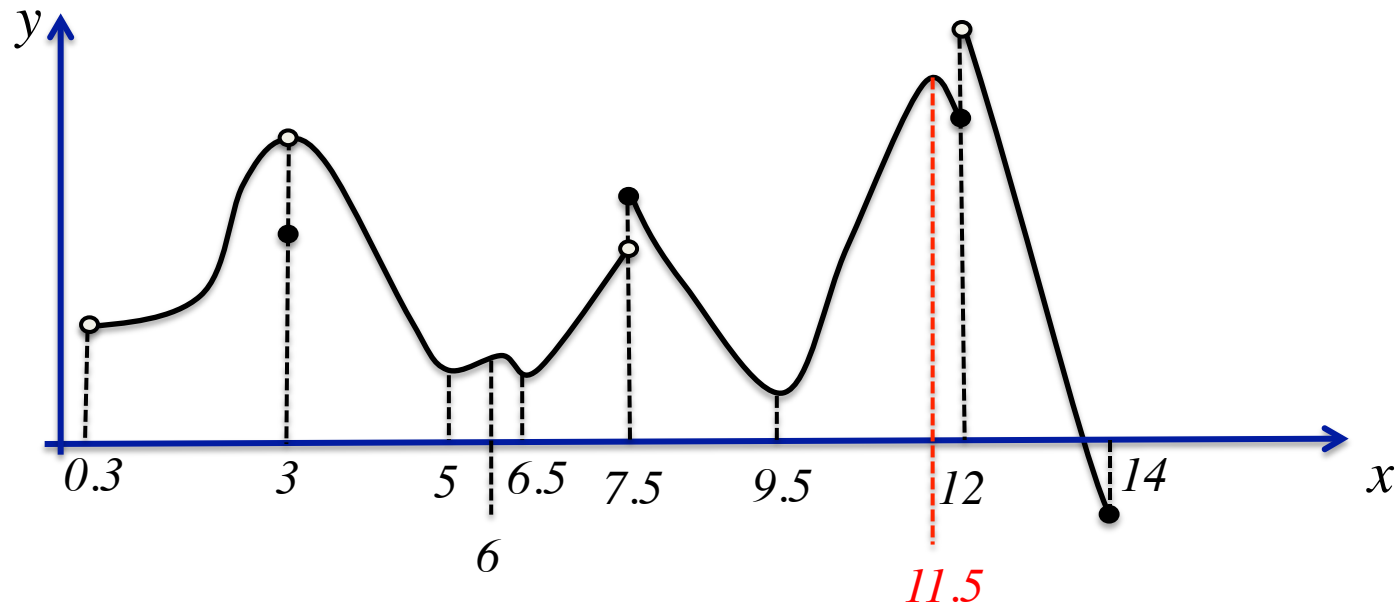
a) 6, 7.5

b) 3, 6, 7.5, 12

c) 3, 7.5, 12 (6?)

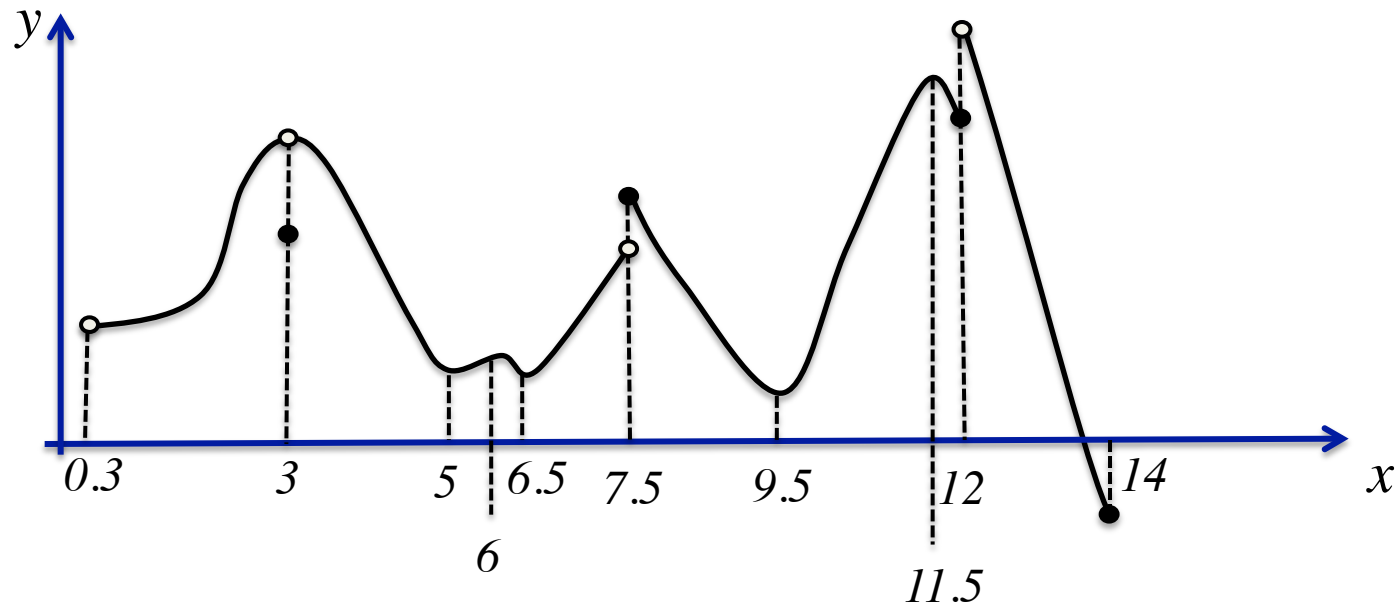
d) 6, 12 (7.5?)

e) None of the above!



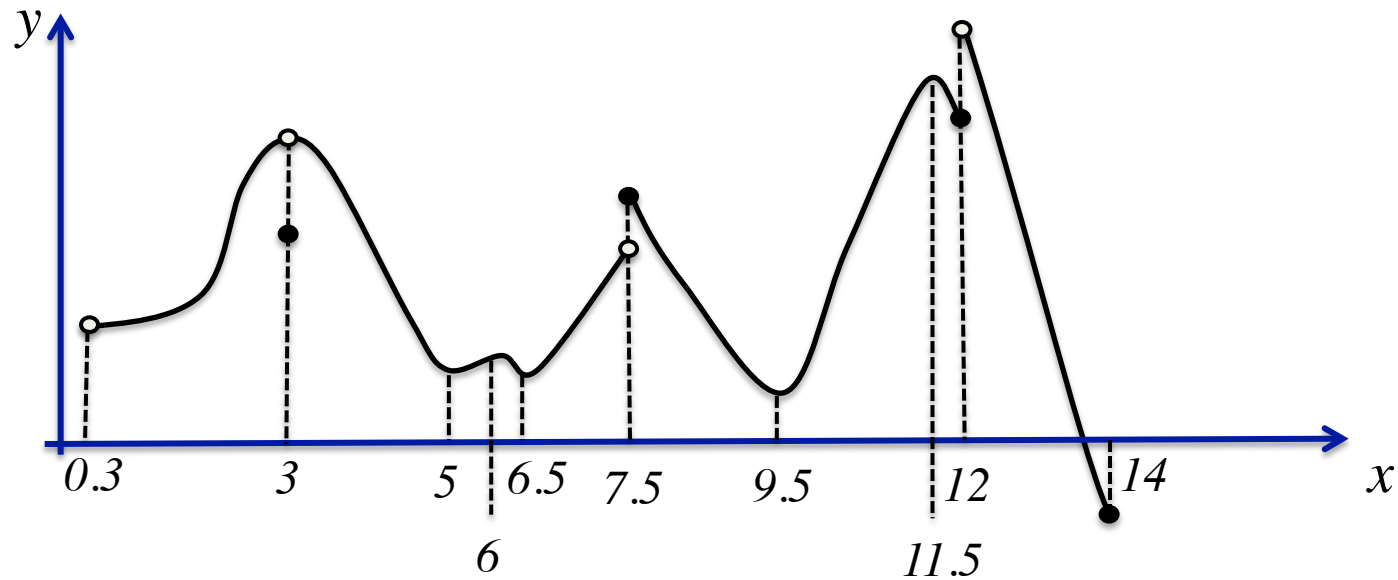
Q2: Identify the location of all of the local maxima

- a) 6, 7.5 (incomplete)
- b) 3, 6, 7.5, 12 (and incomplete)
- c) 3, 7.5, 12 (6?) (and incomplete)
- d) 6, 12 (7.5?) (and incomplete)
- e) **None of the above!**



Q3: Identify the location of absolute minimum and maximum

- | | |
|--------------|-------------|
| a) 9.5, 11.5 | d) 9.5, DNE |
| b) 14, 12 | e) 14, DNE |
| c) DNE, DNE | |



Q3: Identify the location of absolute minimum and maximum

a) 9.5, 11.5

b) 14, 12

c) DNE, DNE

d) 9.5, DNE

e) 14, DNE