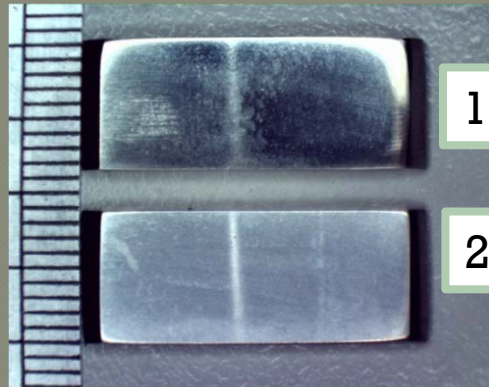


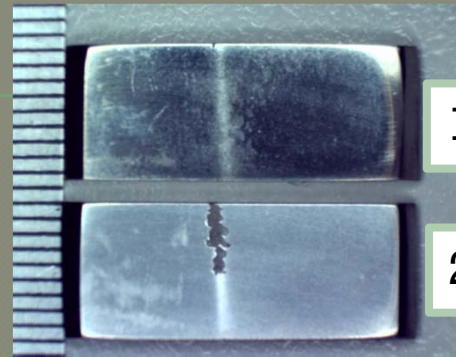
TiAl vs. Ti6Al4V

Erosion resistance test
1st trial

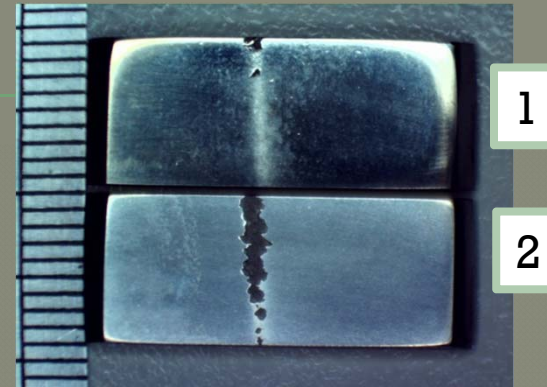
Samples after erosion cycles



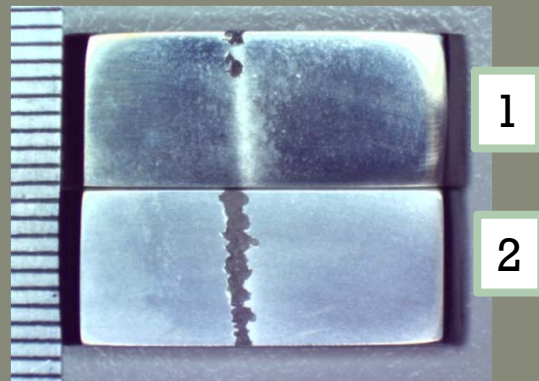
After 1 min



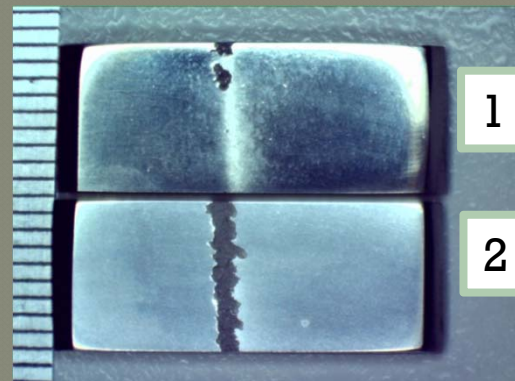
After 2 min



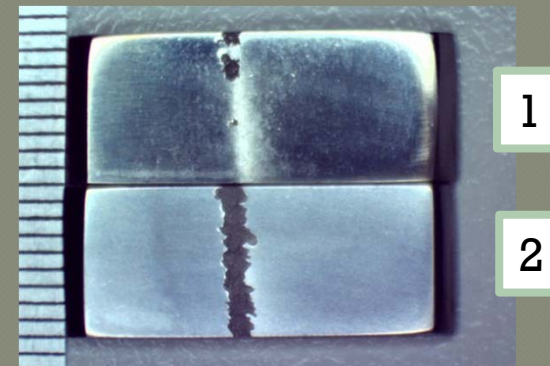
After 3 min



After 4 min



After 5 min



After 6 min

1 - TiAl

2 - Ti6Al4V

Conditions used:

- ✓ One water stream
- ✓ Pressure of water = 30psi
- ✓ Flow rate of water = 0.04 L/min

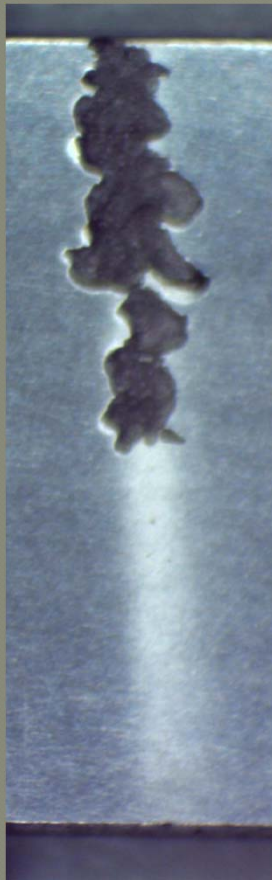
Samples after erosion cycles

Ti64. Cycles 1-6

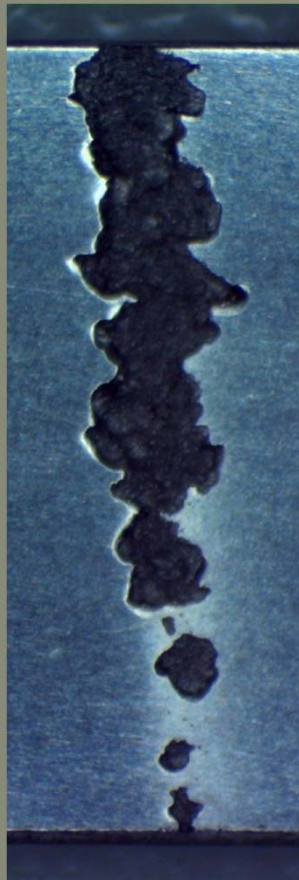
1



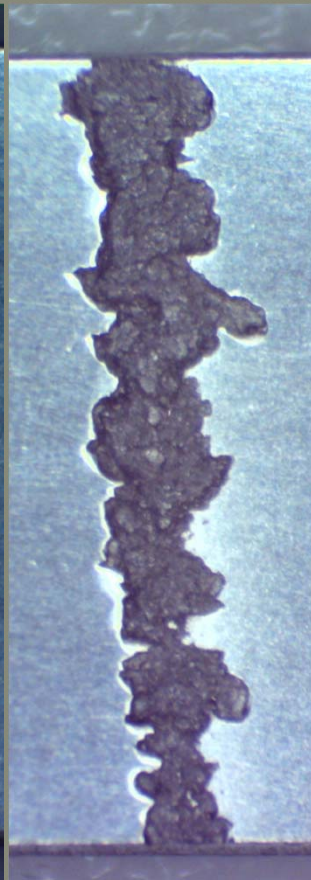
2



3



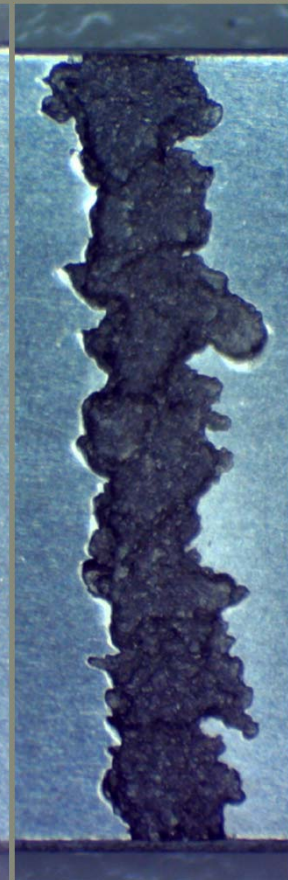
4



5



6



Samples after erosion cycles

TiAl. Cycles 1-6

1

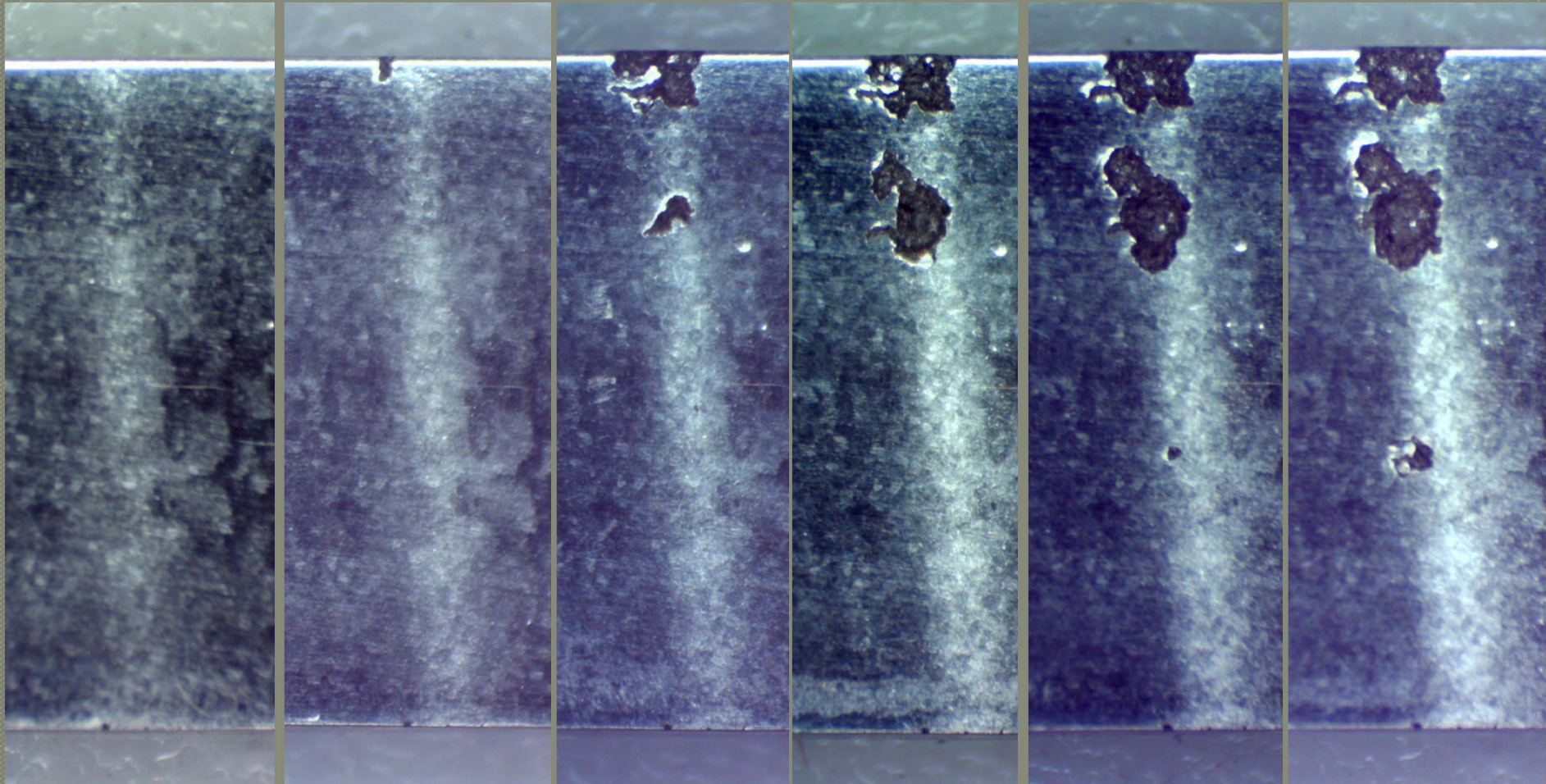
2

3

4

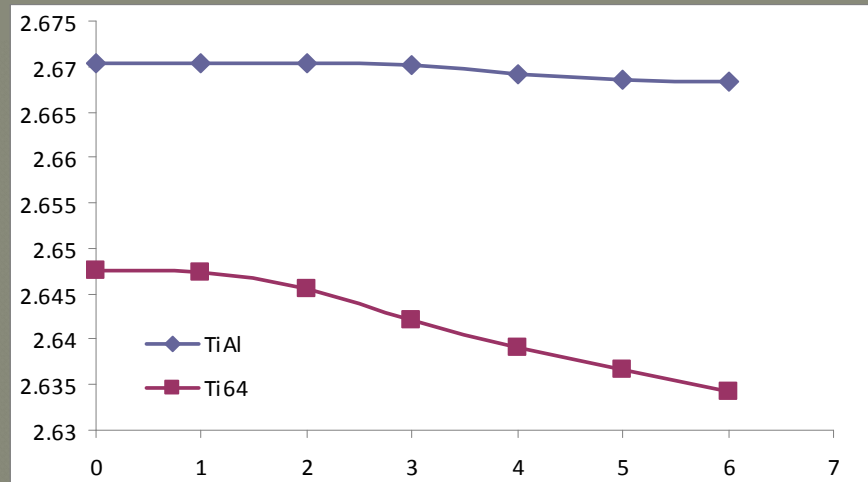
5

6

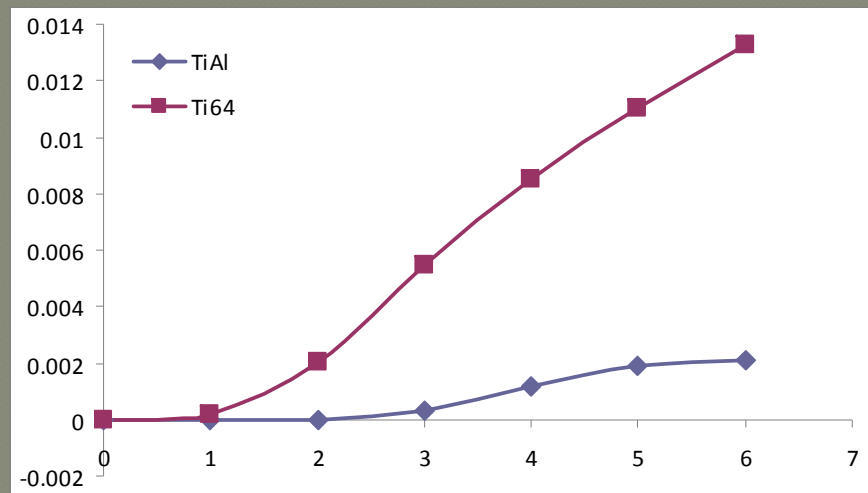


Weight loss graphs

Sample weight
after each
cycle(grams)
vs. time(sec.)



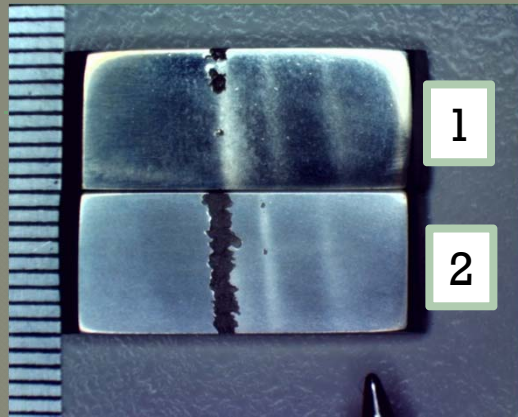
Weight
Difference
from original
weight
(grams)vs. time
(sec.)



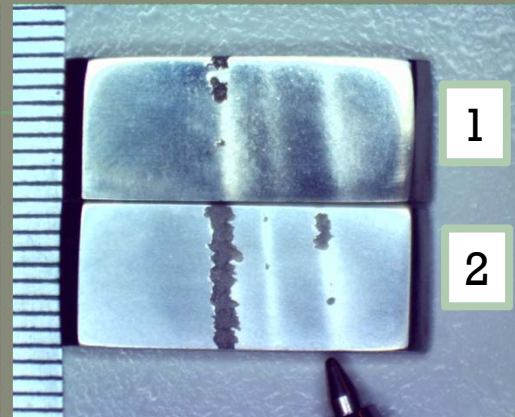
TiAl vs. Ti6Al4V

Erosion resistance test
2nd trial

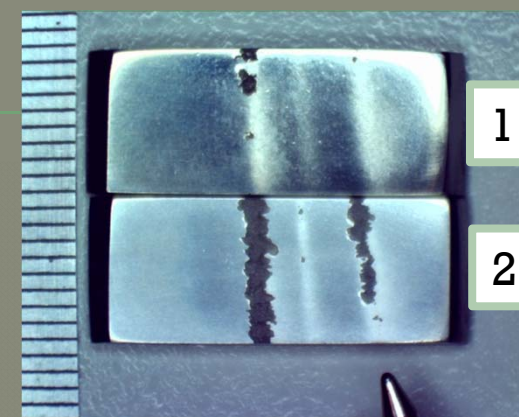
Samples after erosion cycles



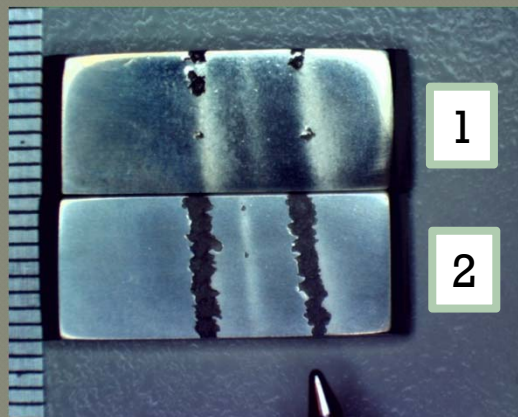
After 1 min



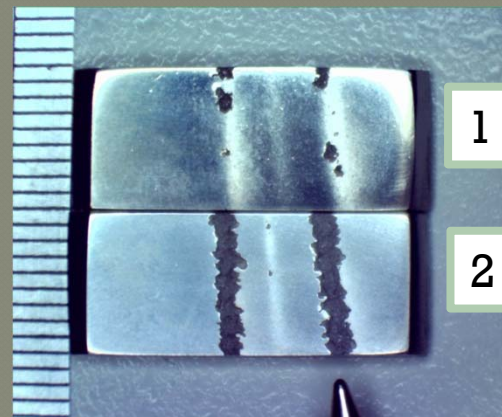
After 3 min



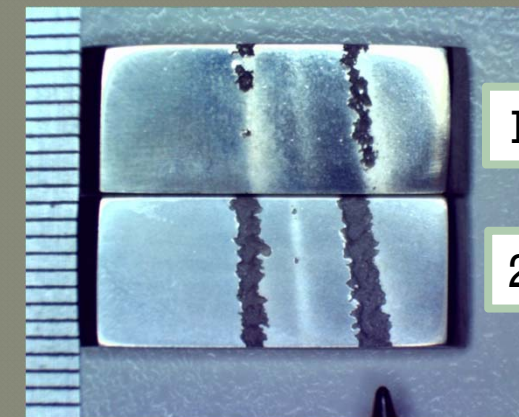
After 4 min



After 6 min



After 8 min



After 12 min

1 - TiAl

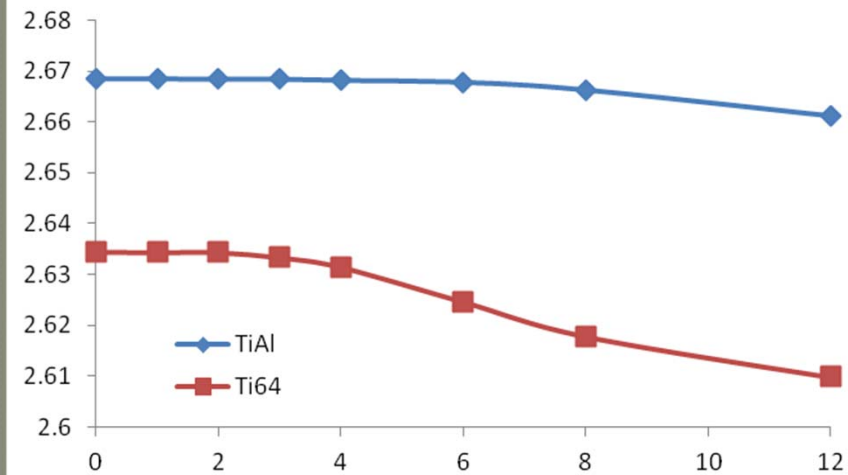
2 - Ti6Al4V

Conditions used:

- ✓ One water stream
- ✓ Pressure of water = 20psi
- ✓ Flow rate of water = 0.03 L/min

Weight loss graphs

Sample weight
after each
cycle(grams)
vs. time(sec.)



Weight
Difference
from original
weight
(grams)vs. time
(sec.)

