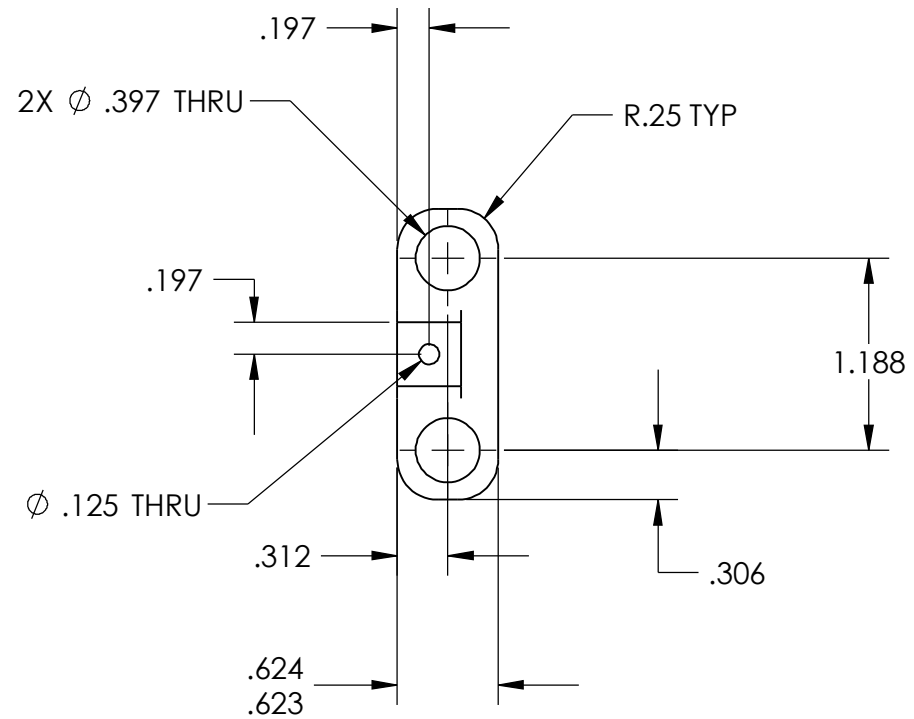
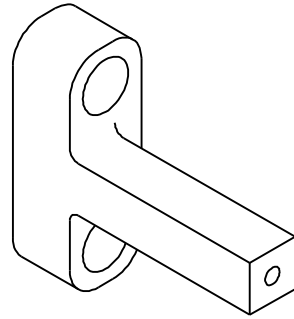
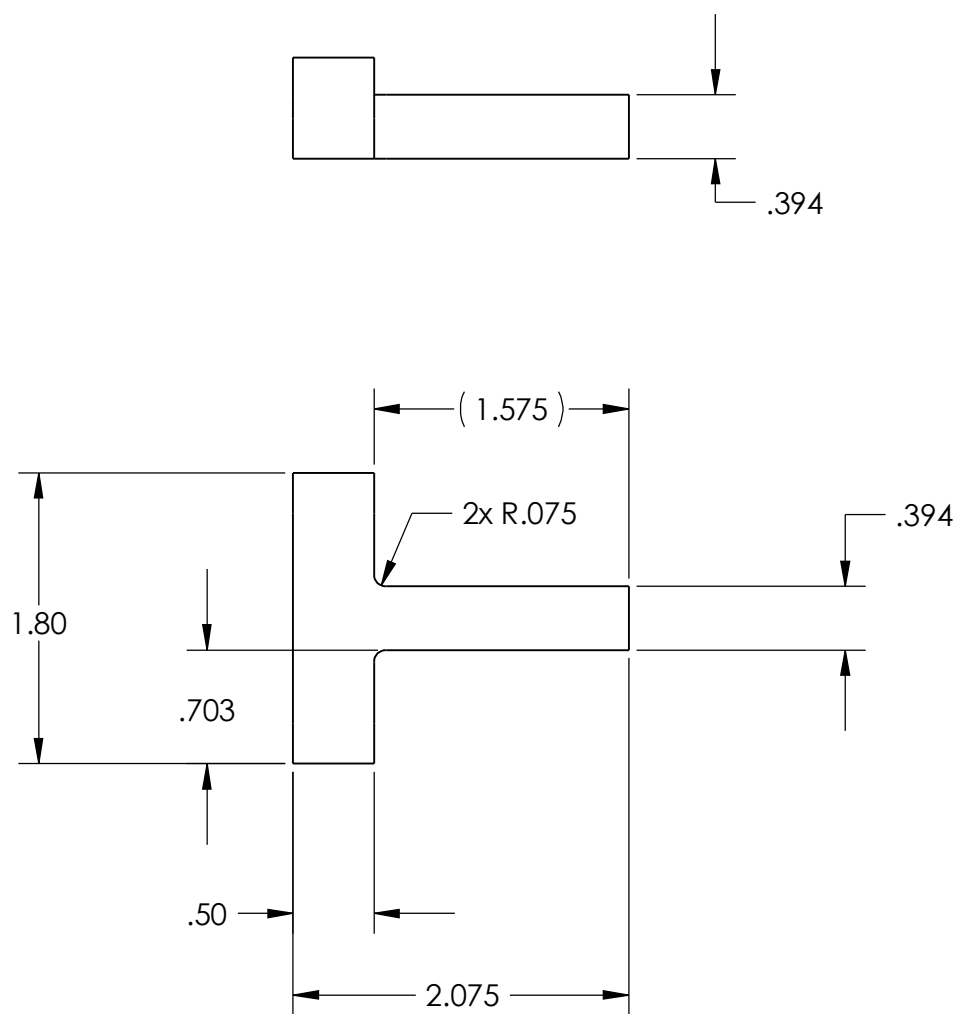


THE INFORMATION CONTAINED IN THIS DRAWING IS THE SOLE PROPERTY OF BARBOUR STOCKWELL, INC. ANY REPRODUCTION IN PART OR WHOLE WITHOUT THE WRITTEN PERMISSION OF BARBOUR STOCKWELL, INC. IS PROHIBITED.

REVISIONS				
ZONE	REV.	DESCRIPTION	DATE	APPROVED
	-		11/17/2011	
	A	ADDED MISSING 1/8" HOLE	11/17/2011	TL
	B		2/17/2012	TL

F  
E  
D  
C  
B  
A

F  
E  
D  
C  
B  
A



- NOTES:**
- BREAK ALL SHARP EDGES R0.02 MAX.
  - MAX CORNER RADIUS 0.01 UNLESS OTHERWISE NOTED.
  - DEBURR ALL DRILLED AND TAPPED HOLES  $\phi$  1/32 OVERSIZE
  - ALL DIAMETERS TO BE CONCENTRIC WITHIN 0.005.

THIRD ANGLE PROJECTION	UNLESS OTHERWISE SPECIFIED DIMENSIONS ARE IN INCHES TOLERANCES ARE:	CAD GENERATED DRAWING. DO NOT MANUALLY UPDATE		
	FRACTIONS DECIMALS ANGLES $\pm$ .XX $\pm$ .01 $\pm$ 1 $\pm$ .XXX $\pm$ .005 $\pm$ .XXXX $\pm$ .0005	APPROVALS	DATE	
MATERIAL	CUSTOMER SPECIFIC	TL	8-9-11	COUPON HIGH SPEED
FINISH	125 RMS	KM	2-17-12	
HARDNESS	CUSTOMER SPECIFIC	Product Eng.	MFG ENG	DWG. NO. 12400-303 REV. B
		QUAL ENG	---	SIZE B 1:1 12400-303 - Coupon High Speed Sheet 1 OF 1

8 7 6 5 4 3 2 1