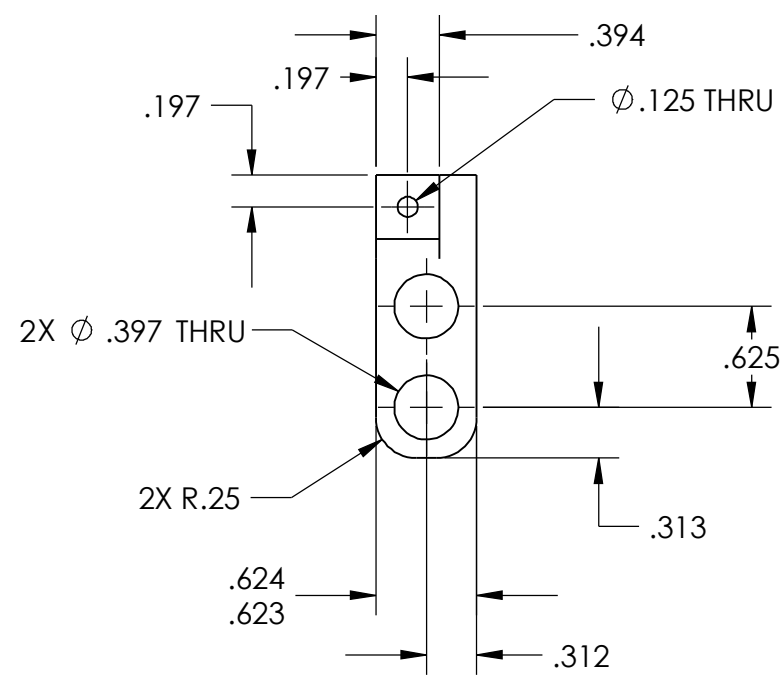
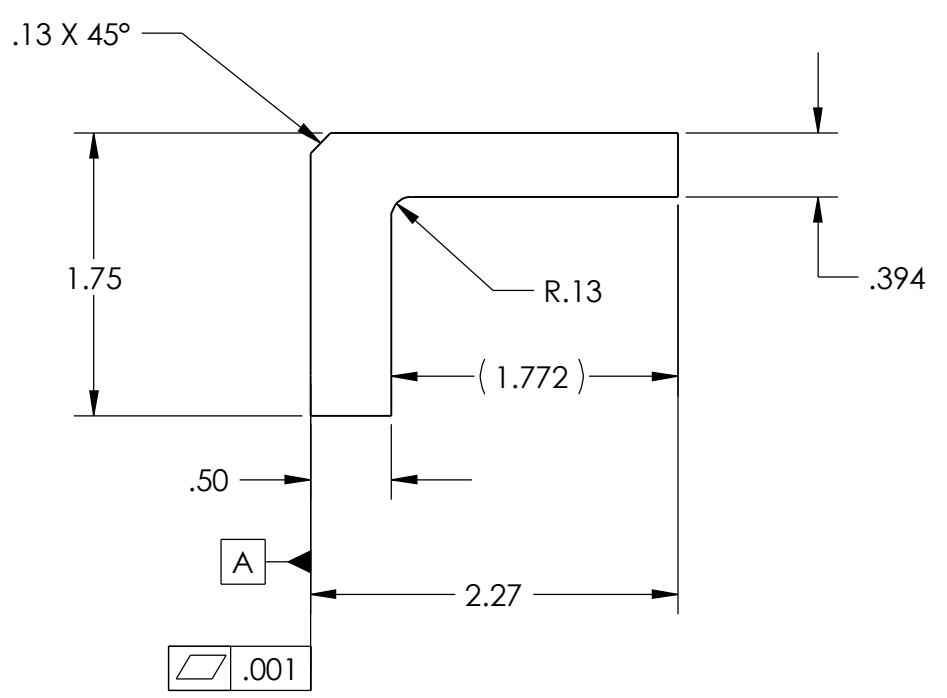
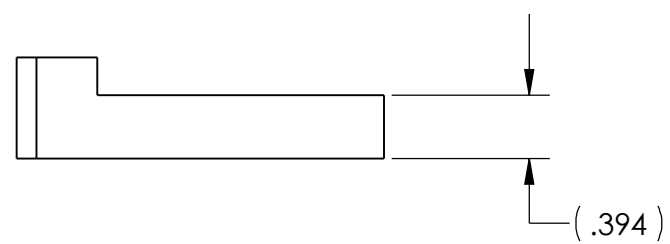
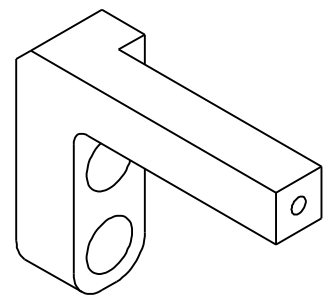


THE INFORMATION CONTAINED IN THIS DRAWING IS THE SOLE PROPERTY OF BARBOUR STOCKWELL, INC. ANY REPRODUCTION IN PART OR WHOLE WITHOUT THE WRITTEN PERMISSION OF BARBOUR STOCKWELL, INC. IS PROHIBITED.

REVISIONS				
ZONE	REV.	DESCRIPTION	DATE	APPROVED
	04		11/9/2011	
	-		11/17/2011	
	A		2/17/2012	



- NOTES:**
- BREAK ALL SHARP EDGES R0.02 MAX.
 - MAX CORNER RADIUS 0.01 UNLESS OTHERWISE NOTED.
 - DEBURR ALL DRILLED AND TAPPED HOLES ϕ 1/32 OVERSIZE
 - ALL DIAMETERS TO BE CONCENTRIC WITHIN 0.005.

THIRD ANGLE PROJECTION	UNLESS OTHERWISE SPECIFIED DIMENSIONS ARE IN INCHES TOLERANCES ARE:	CAD GENERATED DRAWING. DO NOT MANUALLY UPDATE		
	FRACTIONS DECIMALS ANGLES \pm .XX \pm .01 \pm 1 \pm .XXX \pm .005 \pm .XXXX \pm .0005	APPROVALS	DATE	
MATERIAL	CUSTOMER SPECIFIC	DRAWN	8-9-11	COUPON LOW SPEED
FINISH	125 RMS	CHECK	2-17-12	
HARDNESS	CUSTOMER SPECIFIC	Product Eng.		DWG. NO. 12400-302 12400-302 - Coupon Low Speed
		MFG ENG		REV. A Sheet 1 OF 1
		QUAL ENG		